



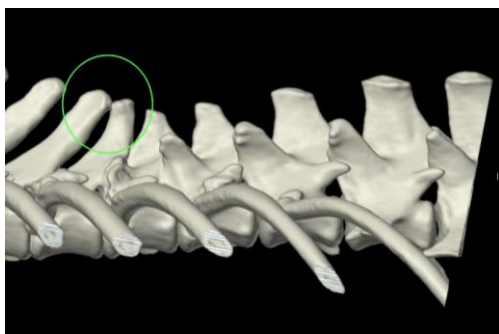
**FOREST**  
Veterinary Centre

[www.forestvets.com](http://www.forestvets.com)

# Winter Newsletter 2016

## New CT Scanner

Clive, Paul and Glenn have been taking our first CT scans with some very impressive results. These pictures show a working Guide Dogs in the CT scanner. The dog had been experiencing back pain. The image shows that the spinous processes (the sticky up bits!) are touching. This is called a "kissing spine".



This is not what Clive was expecting. The dog will now have an operation to resect the spinal bones that are causing the pain. All being well, the Guide Dog will be back working with his blind partner as soon as he is recovered from the operation. Some of the conditions diagnosed so far are, tumours, renal disease in a cat, a fractured spine in a road traffic accident and joint diseases.



**Happy New Year to you all. Thank you for your generous gifts in December.**

**We all had a gift or two to take home on Christmas Eve. 😊**



## Foreign Bodies

We have had a spate of pets eating things they should not. During the festive season please do not give your pets the opportunity to eat Christmas chocolate and decorations.

This is an x-ray of a six-month-old puppy who ate a stone, it became lodged and we had to operate to remove it.

**Main Centre & Hospital:** 78 Hemnall Street, Epping Essex CM16 4LQ  
**Woodford Bridge:** Waltham Road, Woodford Bridge, Essex IG8 8EB  
**Harlow:** Eastwick Lodge, Harlow, Essex, CM20 2QT

**Tel: 01992 575790**  
**Tel: 0208 505 4078**  
**Tel: 01279 437433**

